



Farm Innovators, Inc.  
2255 Walter Glaub Drive  
Plymouth, Indiana 46563  
800-277-8401

## Instructions for using Model 3300 Egg Candler

---

**WARNING:** This is an indoor electrical product that requires basic safety precautions to minimize the risk of electrical shock, personal injury, and product damage. Read all directions and precautions carefully before putting into operation.

---

When using electrical products, safety precautions must be followed as described below:

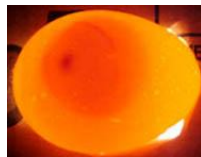
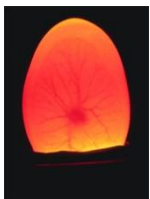
1. **Read all instructions.**
2. To protect against electrical hazards, **DO NOT IMMERSE THE PRODUCT IN WATER**
3. Always unplug the product when not in use.
4. **Do not use extension cords!**
5. **Do not use the product** if the product has malfunctioned or has been damaged in any manner.

### Instruction for using Model 3300 Egg Candler:

Equipment Needed: Egg Candler, Pencil, Empty Egg Cartons

Begin candling your eggs at day 4 of the incubation process using the following steps:

1. Remove eggs from incubator and place in empty egg cartons.
2. Dim the lights in the room.
3. Hold the large end of each egg one at a time against the candler.
4. Observe egg to determine if it is fertile or infertile. See images below:



First image shows mainly thin red veins in a soupy yellow mixture. This is a fertilized and developing egg. The image on the right shows a blood spot. This is a bad egg.

5. Discard non-fertile (“clears”) or those that have stopped developing (“quitters”).
6. Return the viable eggs to the incubator. Do not leave outside of incubator for more than 30 minutes.
7. Repeat the process every few days. Fertile eggs will become opaque after about 10 days with a dark mass inside shell.

If you are unsure about the fertility of an egg, mark it with a question mark in pencil and observe it later. For more information on Egg Candling and other Incubation topics, please consult your local library or the internet.